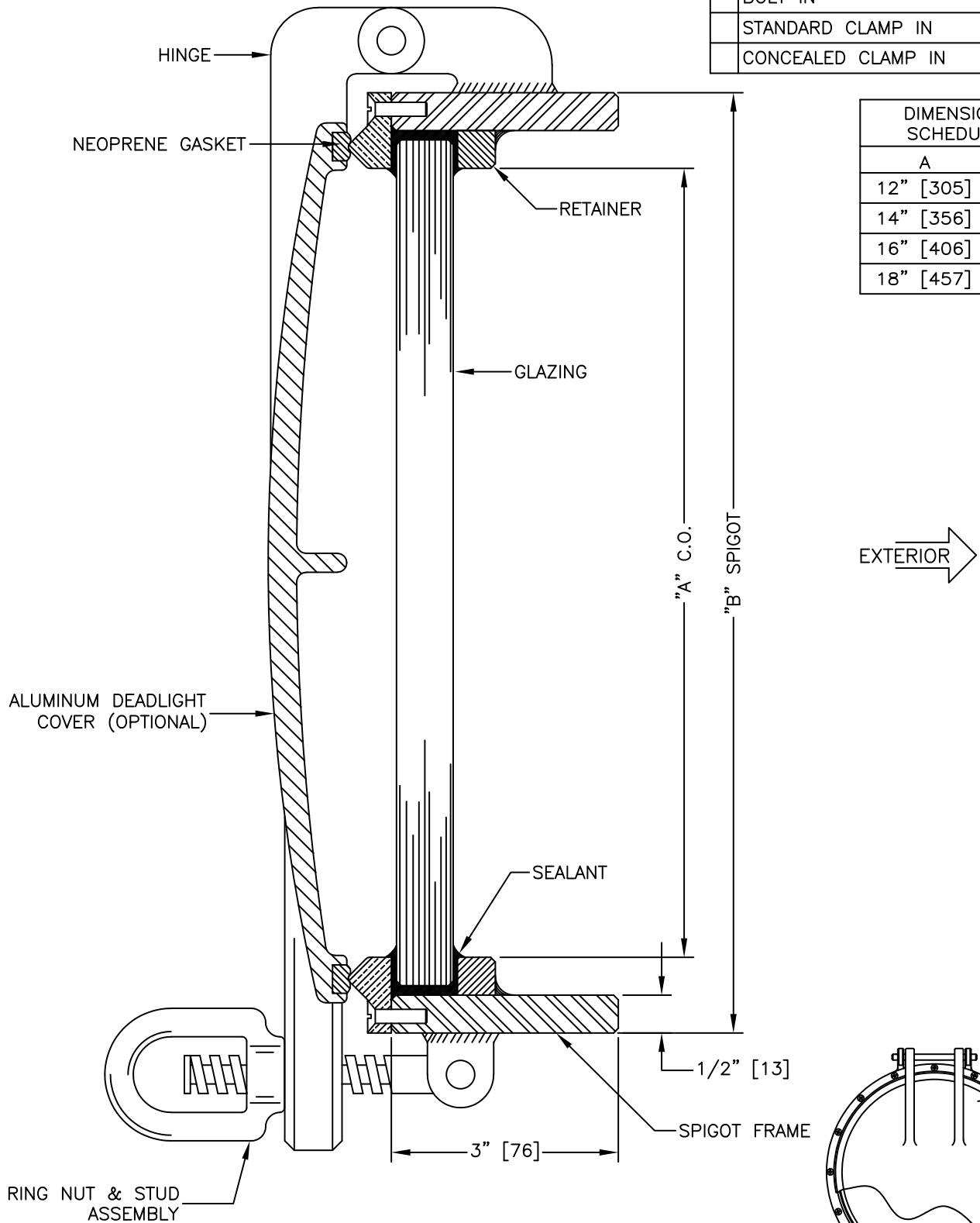


INSTALLATION

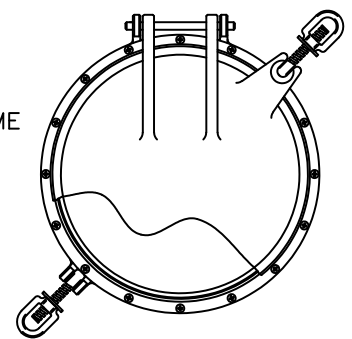
• WELD IN
BOLT IN
STANDARD CLAMP IN
CONCEALED CLAMP IN

DIMENSION SCHEDULE

A	B
12" [305]	14"
14" [356]	16"
16" [406]	18"
18" [457]	20"



GLAZING THICKNESS RANGE FROM 1/2" [13mm] TO 1" [25mm]  
SPECIFY STEEL OR STAINLESS STEEL SPIGOT.



TITLE: WELD-IN FIXED  
ROUND PORTLIGHT

MODEL NO. PCM-3001-W

REV

SCALE: HALF SIZE SHEET: 1 OF: 1