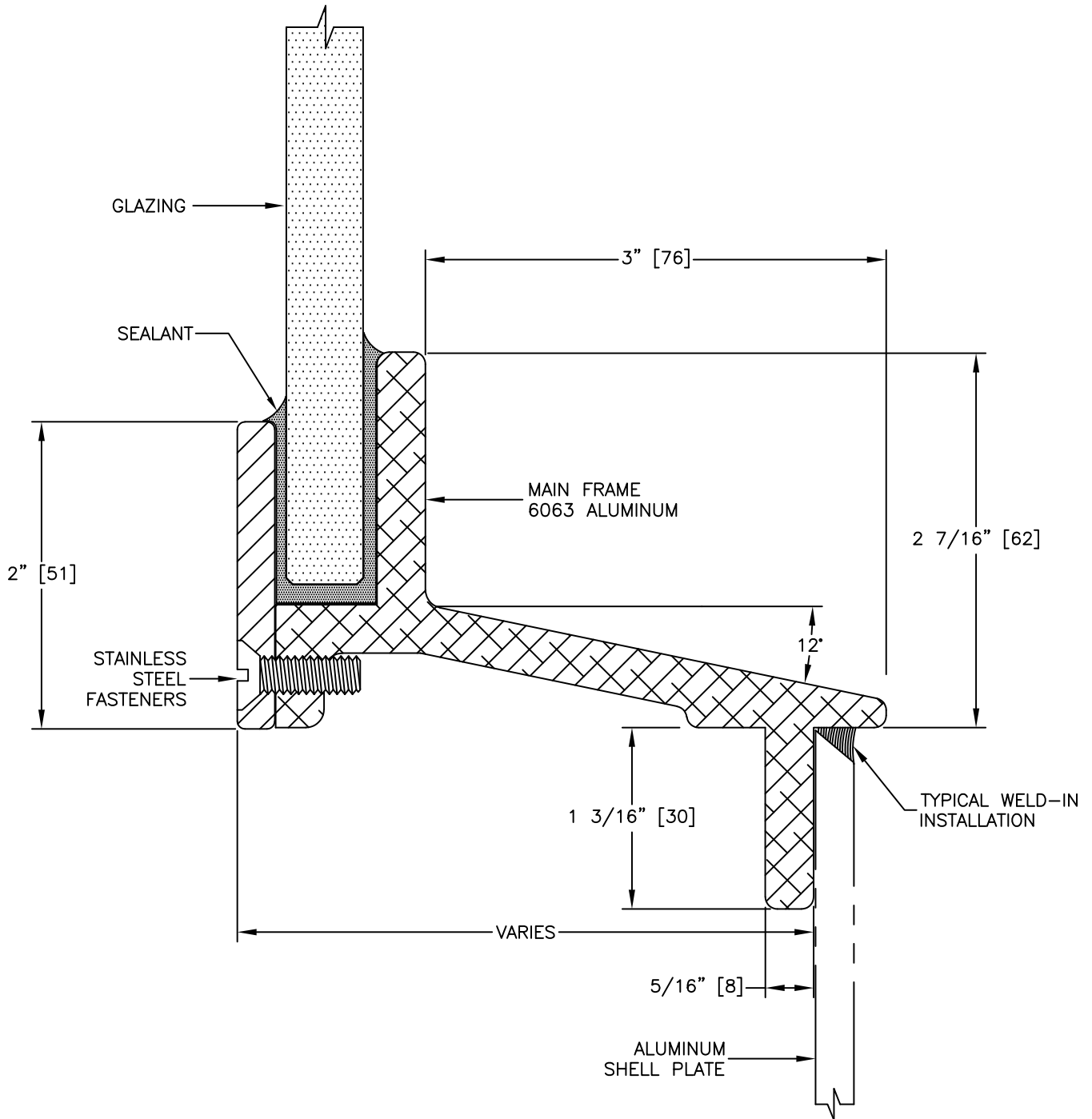


INSTALLATION

• WELD IN
BOLT IN
STANDARD CLAMP IN
CONCEALED CLAMP IN



GLAZING THICKNESS RANGE FROM 1/4" [6mm] TO 1" [25mm].  
STANDARD PLATE CUT RADIUS IS 6 1/8" [156].



TITLE: FIXED WINDOW

MODEL NO. PCM-1112-FX  
SCALE: FULL SIZE SHEET: 1 OF: 1

REV  
—