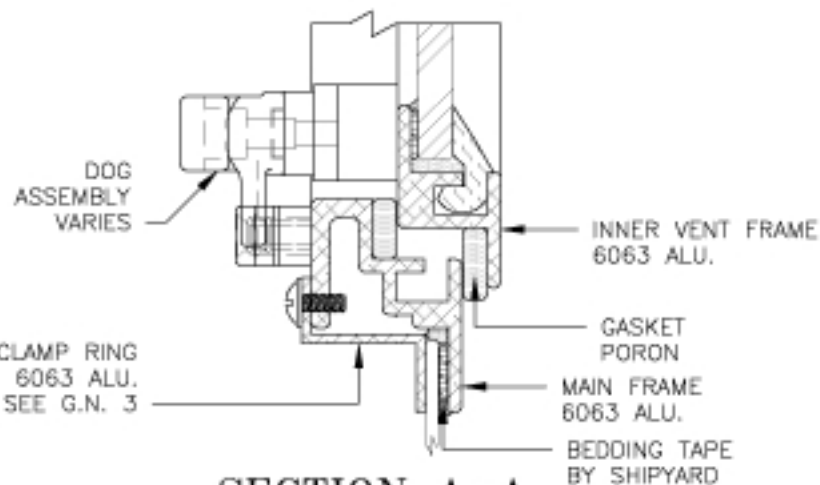


EXTERIOR ELEVATION



SECTION A-A

GENERAL NOTES:

- 1) GLAZING THICKNESS RANGES FROM 1/4" [6mm] TO 1/2" [13mm].
- 2) STANDARD PLATE CUT RADII: 3 5/8" [92mm] AND 4 1/8" [105mm].
- 3) CLAMP RING AVAILABLE FOR VARIOUS BULKHEAD THICKNESSES.